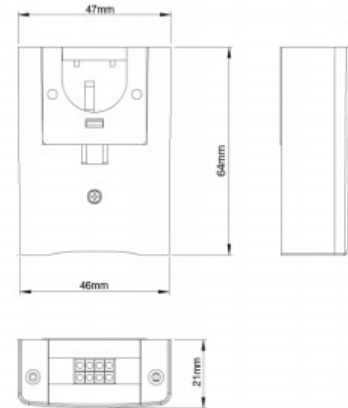
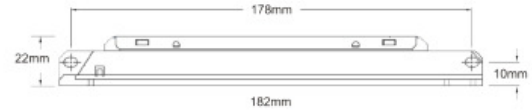


Slide On LED

- Prevents damage to fluorescent lamp.
- Very wide spacing.
- Energy savings, extra low standby power consumption.



CLASS I

TECHNICAL SPECIFICATIONS

Model Number :	ELD1NM	ELD2NM
Mode of Operation :	Non-Maintained	
Lamp :	2.4W LED Module	3 x 3W LED Modules
Rated Duration :	2 Hours	
Mains Supply :	220-240 Volts	
Mains Frequency :	50-60Hz	
Power Consumption :	< 1.5W	
Battery :	High Temperature Nickel Cadmium (NiCd)	
Charge Monitor :	LED	
Test Facility :	Micro switch	
Safety Features :	Low battery voltage cut off to prevent over discharge	
Recharge Period :	< 24 Hours	
Fitting Construction :	Injection moulded with fire retardant, high impact material	
Weight :	Approximately 0.3 kg	
Standards :	IEC 60598-2-22	

Ordering Guide:

Ordering Code

ELD1NM

ELD2NM